

**HUMANITIES LIBRARY
ANNUAL REPORT
2002-2003**

ANNUAL REPORT HUMANITIES LIBRARY FY2003

Table of Contents

Report

Interlibrary Borrowing Statistics

Reference Statistics

Circulation Statistics

Instruction Statistics

Authors@mit Statistics

Humanities Library Annual Report, 2002-2003

Administration Space

This past year has seen great change supported by a stable group of administrative staff and new and continuing library support staff. The most visible change occurred on the first floor of Hayden Library as we were able to complete an ambitious renovation project encompassing Hayden Circulation, Reserves, Interlibrary Borrowing in addition to Science Reference, Science Public computing, and the Science Reading Room, especially the current periodical display. The students now also have access to a 24/7 reading room and two group study rooms that were part of the renovation project. This was celebrated in a public event hosted by the Director of Libraries in October 2002.

The staff of Hayden Access Services (Circulation, Stacking, Reserves, and Interlibrary Borrowing) deserves praise for taking on both the challenges and opportunities provided by the renovation project. In the summer of 2002, Hayden Circulation and Stacking operated out of the Music Library and Hayden Reserves and Interlibrary Borrowing were preparing for the move to 14S-100. The Lewis Music Library was very generous in its support and Hayden Circulation was a responsible guest. Both operations took advantage of the opportunity to learn more about the other's work and policies. The Libraries' facilities coordinator did all that was possible to protect the Lewis Music Library from the wear and tear of increased traffic, and Hayden Staff enforced the no food and drink policies of Lewis Music effectively.

As the staff moved into the new space and adapted their work patterns, we identified problems associated with the design and held meetings of the entire Access Services staff to resolve the problems and conflicts. The architects had spent considerably less time on the staff spaces than on the public spaces, requiring some retrofitting and customization of the space. The move also highlighted the cultural differences among the units of Access Services. Interlibrary Borrowing and Reserves were accustomed to a quiet working environment conducive to attention to detail and production; Hayden Circulation and Stacking were accustomed to a lively, noisy environment conducive to transactions with the public and the movement of large amounts of printed material. The Access Services Librarian and the Circulation Supervisor are working with the staff to resolve issues related to the working environment. Reserves and Interlibrary Borrowing both benefit from the proximity of Hayden collections and the Circulation unit. There is no doubt that the user community is much better served by the merger.

In addition, the proximity of Science Reference to the Reserve and Circulation Services desks required attention. In the spring of 2003, the Head of Humanities and the Acting Head of Science charged a task group to work through workflow problems and increase communications among the units. This Ad hoc group will finish its work in September, 2003 and has already succeeded in instituting and using a new mailing list to alert each other of service changes and has begun to train reference staff (from both of Hayden's libraries) on circulation procedures and policies.

The move of Hayden Reserve Book Room to Hayden Access Services made the creation of a bright, attractive electronic classroom possible in that space (The Digital Instruction Resource Center—DIRC). In addition, Humanities Processing moved into the space vacated by Interlibrary Borrowing. This office is much larger than the old one and accommodates the staff and student staff more comfortably. This room change, made it possible to create private offices for the Associate Head and the Reference Coordinator. Other Librarian staff have small private or semi-private spaces. This has increased the productivity and morale of the librarian staff. As we prepared for these moves, we also hosted Preservation Services in our Reading Room as their new facilities were under construction.

In the coming year, our attention will focus on making small changes in the Humanities reading room, starting with our public computing facility. The Humanities Reading room has a great need for modernization and improved study spaces for our students. The contrast with the first floor of Hayden adds urgency to this endeavor; we hope to effect a series of small, low cost projects. In addition to the public computing area, we hope to enhance the current periodical reading area and study spaces.

Staff

The Access Services Librarian, the Circulation Supervisor, and the Department Head worked on recommendations to Steering Committee for staffing Access Services after the mergers. Our recommendations were accepted, including:

- Eliminate Reserve Assistant (Part Time—20 hours) position
- Remove \$14,000 from Humanities Library Student Budget (Acct #1608200)
- Extend ILB Assistant (Part Time-- 25 hours) for one year, until June 30, 2004; include reserve work
- Make Stacker (Part time—20 hours) a one year appointment, until June 30, 2004
- Make Stack Manager position permanent (currently contracted through October, 2003)

Hayden Access Services had the greatest number of staff changes. Three out of eight positions in Circulation and Stacking were vacated; two of those positions have been filled, one is pending. In Interlibrary Borrowing one of three positions was vacated and filled. The Processing Team also had vacancies in the Dewey focused part of the team, leading the Humanities members to contribute to Dewey Processing and the training of the new staff. Remarkably, our administrative staff saw no personnel changes.

Bringing the MIT Libraries practices in line with federal law for non-exempt staff had the unhappy result of a significant loss of flexibility in the units of the Humanities library and also resulted in personal loss of flexibility for staff members. This, combined with the staff reclassification project, resulted in reduced morale. We are working together to overcome the challenges these changes have imposed.

Staff contributions to MIT Libraries

The Humanities Library has a long-standing commitment of service to the MIT Libraries; there is hardly a group in the MIT Libraries that does not include at least one Humanities staff member. A major focus of our fall, 2002 retreat was the centralized and general services delivered to the community on the behalf of the MIT Libraries

Below is a list of central/general services to which we are committed:

- General Reference—phone, e-mail, in person
- Development of Virtual reference Page
- Interlibrary Borrowing
- BLC Liaison and BLC Patron registration
- Harvard Reciprocal Privileges—Liaison, statistics, Harvard Registrations
- General and Recreational collections in Humanities and Music
- Library and Information Science Collection
- E-reserves
- Reserve Working group leadership
- Orientation Coordinator
- Digital Reference Coordinator
- Disabilities Access Coordinator
- Access Services Librarian
- Management of 24/7 Study Space in Hayden
- Issuing of BLC cards to members of the MIT Community

In the spring of 2003, after deliberations in the Reference Committee, we trained the staff of the other Divisional Libraries in issuing of BLC cards. This makes it possible for users to obtain access to both Harvard and BLC Libraries from any of the Divisional Library Reference Desks. We are still responsible for keeping the system wide statistics.

The Dewey/Humanities Processing Team was notable this year in its contributions to the Library System. It provided daily processing in the Lewis Music Library during an extended emergency absence and worked in the Serials and Acquisitions Services Serials section and trained a new staff member there on the check in procedures for Dewey legal materials. They also contributed greatly to the system wide processing manual.

Our reference staff have contributed and led much of the work toward the Reference Vision implementation, including planning for the Central Help Service and Request Tracker e-mail software.

The Humanities Library also contributed leadership and participation in all Orientation activities.

Access Services

Reserves

During the late summer of 2002, the Access Services Librarian worked with AMPS and members of the staff of MIT Libraries to offer e-reserves through Stellar (A Course Management System developed at MIT). In the fall, all support came from Access Services with 26 courses supported. In the spring, the Music Library supported 3 courses and Access Services supported 33. Staff of Hayden Access Services contributed to the processing of e-reserves. The vacant part time reserve assistant funding was made available, but we were unable to keep an individual in this temporary position.

As we look toward the future, we expect to train other Reserve Units to support e-reserves for their constituencies. The Dewey, Rotch, and Humanities Libraries' communities have been the major participants; we are hoping to increase the participation from the School of Science. The School of Engineering and the Sloan School use other course management systems instead of Stellar.

Interlibrary Borrowing

The activity Interlibrary Borrowing has increased significantly this year; there was a 9.2% increase in total ILB requests (this includes requests for materials that were found in the MIT Libraries) and a 9.4% increase in the number of ILB requests that resulted in requests to other institutions.

This year we hope to find ways to decrease the percentage of requests (over 11% this year) for materials held by the MIT Libraries. We will seek the advice and help of the Instruction and Reference Committees along with our web design staff.

Although we had a vacancy in ILB from January to May, with the help of several people in the department and an excellent student assistant we were able to maintain our high service standards. ILB has successfully incorporated many changes in their workflow and efficiencies in using software resources fully in this past year. We hope to continue this trend and are currently investigating using the web interface for OCLC searching and request generation. The head of Access Services is working with members of the Systems and Technology Services Department to find solutions for efficient searching of the Boston Library Consortium journal holdings in the absence of the BLC Union List. We will be experimenting with sharing the ILB part-time assistant with the Reserve Unit. The busiest periods of Reserves processing maps well with least busy period for ILB, giving us maximum flexibility in allocating staff resources.

Circulation and Stacking

There was a modest increase in Circulation activity this year (a 4% increase in checkouts, not including reserve circulation) but a large drop off of in house use (-27%). Since our door count is up, it is likely that the increased availability of electronic journals is decreasing the use of paper in both Science and Humanities. The in house use dropped more significantly in the Science Reading Room and the Hayden Basement, compared with the drop in in house use in the Humanities Reading Room. The forthcoming study of journal use will help to inform our storage programs. The total checkout when reserve activity is counted has increased by over 15%.

The staff has shifted most of the collections in Hayden over the last eighteen months. This year the Women's Studies research room was shelf read and shifted after a major storage project. The good communications among the processing units and circulation in Hayden has improved our ability to keep up storage projects and the changes in growth patterns of the collections. The Humanities Library uses more than 90% of its shelf space, which makes shelving more time consuming. We will be storing more monographs this year, but a longer-term solution needs to be identified.

Reference Services

Humanities reference staff started a process this fall to increase expertise among the staff through training, setting standards for knowledge of our core databases, and increased use of our RIS meetings to review and consolidate our learning. We experimented this fall with giving the staff the option of working at the reference desk (formerly all Humanities staff members were expected to contribute to the desk service); two staff members opted out, but in both cases they contribute to our reference services either through staffing AskUs! Or through answering ILB queries.

Those who opted in accepted the responsibility to participate in training and to keep up with our expanding electronic resources.

In addition, our Reference Coordinator was trained in Circulation and Reserve Services and has been staffing the Circulation desk on a regular schedule. This has increased understanding of the contributions of the circulation unit to information services and is helping to set the stage for Information Services training for the Circulation Desk staff.

In the spring, we created a small group to envision the future of reference services in the Humanities Library. Our ideas for projects range in scope from a potential ISP to wearing ID badges. We are fortunate to be able to proceed, in collaboration with Hayden Access Services, to learn some circulation skills and look forward to offering some circulation services at the Humanities Reference Desk. We expect to move forward, in collaboration with Science Reference and Access Services, on developing ways to express the Reference Vision in Hayden. We recognize both the challenge and the opportunity inherent in the changing behaviors of our community vis a vis reference desk interactions.

Collections/processing

The Humanities/Dewey Processing Team had a successful and busy year in Humanities. While maintaining the daily workflow, they shifted and labeled the current periodical collection, making room for our new Asian Studies and other titles. They also created new circulation periods for the travel collection (books now circulate for three days) and created the Browsery location so that users and staff can more accurately locate these books.

Great progress was made this past year in the bound periodicals bar coding project. All volumes from A to P.L have been barcode; Science library has begun to barcode their titles working backwards from TX they are up to TK. Hayden Access Services staff are helping to slip books for storage decisions and may be able to contribute to the barcoding project in the future. The bar coding will have a significant impact on circulation, as it will reduce the manual circulations drastically. It will also automate the overdue process for these journals

Women's Studies Research Room books were slipped, reviewed by the subject selector, and one thousand titles were sent to storage. We are now planning a large storage project for FY2004 as the three years growth we gained in FY 2000 major storage project has been used. Our goal is to store 12,000 more monographs. We hope to work with Science to develop different ways to shelve the Science and Humanities collections in the future. Limiting the Humanities collection in the A-PZ range to 14S-mon200 is not a responsible course in our monograph-reliant disciplines. Undergraduates are being under-served by the collection. Humanities would like to store some periodicals that have electronic versions available; but that gained space needs to benefit our monograph collection.

Humanities subject selectors, under the guidance of the Associate Head and Collection Manager, made a successful proposal for new funds for monographs and serials to support Asian Studies. The infusion of these funds has had a positive impact on many subject lines, including Comparative Media Studies, History, Foreign Literature, Linguistics, and Women's Studies. The subject line not directly affected also benefited from this support of a multi-disciplinary field.

Humanities also received support from new Environment funds which has enabled us to buy Environmental Ethics more systematically and also makes it possible to purchase many interdisciplinary titles on environmental issues from a humanist perspective.

Our monograph collection is continuing to grow rapidly. Humanities place and received the most monograph orders in the system. The six thousand plus orders represent intensive workloads on subject selectors and processing as most of our monographs do not come from approval plans, but are firm orders.

Instruction

The Humanities Library and community from our first full year with an Instruction Coordinator who is also the subject specialist for Psychology and the System wide Orientation Coordinator. Instruction for the very large undergraduate course, Introduction to Psychology, 9.00 was redesigned in collaboration with Prof. Jeremy Wolfe. Many librarians from around the system participated in the workshops and contributed to on demand reference and instruction in the Humanities Library. This coming year is likely to see further changes in this part of our Instruction program.

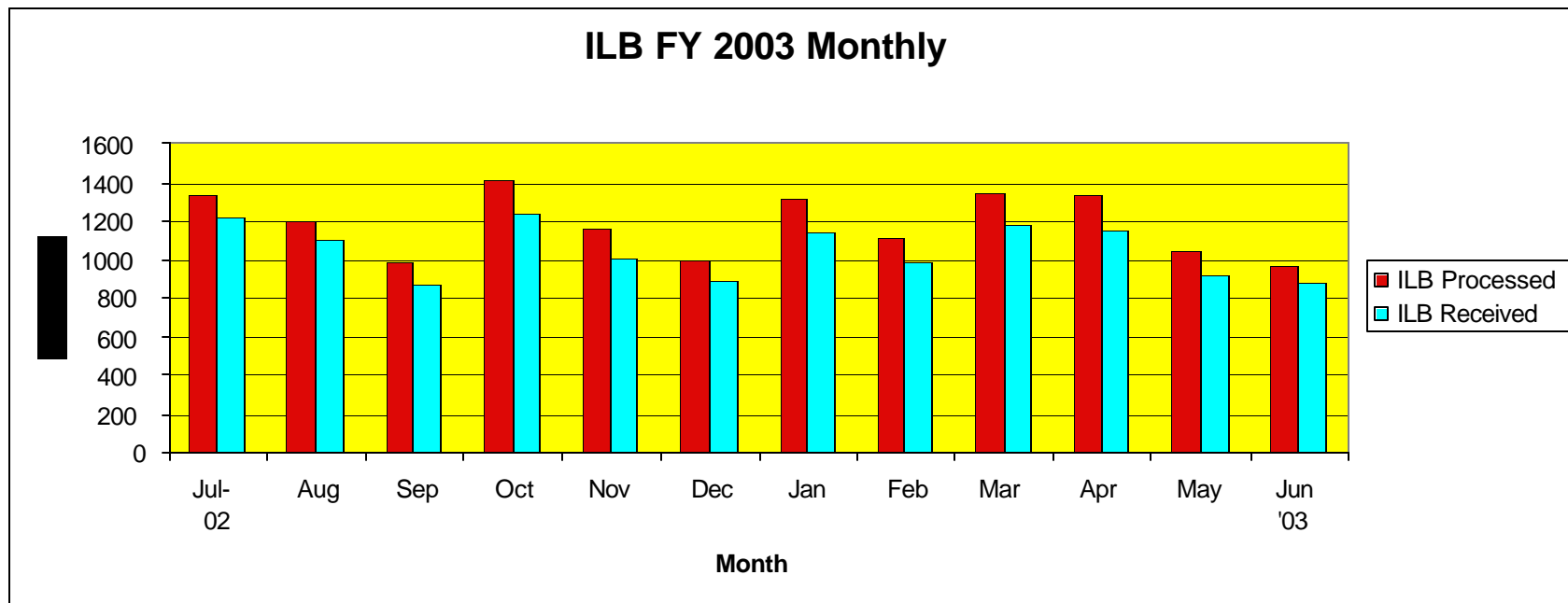
Our instruction statistics shows an increase in the number of sessions offered, but a decrease in attendees. Much of this decrease has to do with authors@mit events this past year, rather than reduced attendance at course based instruction.

I am grateful to all the staff who submitted annual reports that made this one possible; any errors are, of course, my own. All statistics follow this narrative.

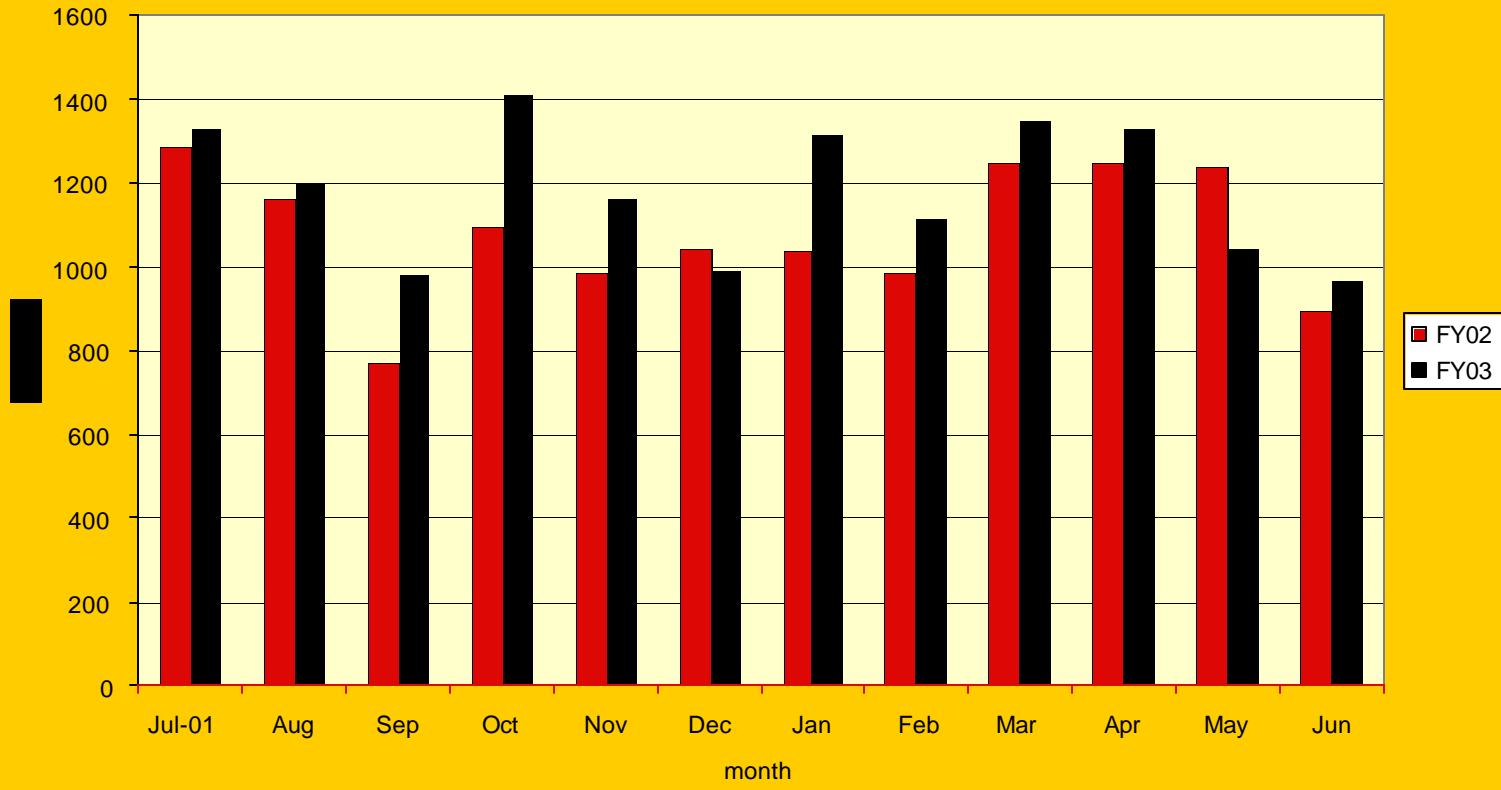
Theresa A. Tobin
Humanities Library
Department Head

15 July 2003

Month	Photocopies Obtained			Originals Obtained				@MIT		P-copy	Unfilled		Denied User X'd	TOTAL	Total
	BLC	Other	Total	BLC	Other	Total	P-copy	Original	Total		Original	Total		PROCESSED	ILB Rec'd
Jul-02	413	369	782	215	209	424	70	29	99	0	12	12	8	1325	1218
Aug	428	392	820	126	132	258	89	13	102	6	11	17	3	1200	1095
Sep	252	317	569	110	139	249	92	26	118	16	25	41	0	977	859
Oct	432	435	867	154	194	348	101	63	164	8	21	29	2	1410	1244
Nov	384	340	724	134	140	274	131	25	156	3	2	5	4	1163	1003
Dec	274	276	550	185	149	334	81	24	105	2	0	2	1	992	886
Jan	412	423	835	172	118	290	143	28	171	6	10	16	5	1317	1141
Feb	350	327	677	143	153	296	92	21	113	4	7	11	15	1112	984
Mar	369	449	845	151	155	306	125	41	166	3	15	18	13	1348	1169
Apr	362	413	775	158	169	327	144	35	179	0	41	41	5	1327	1143
May	302	363	665	118	133	251	88	26	114	0	2	2	10	1042	918
Jun '03	302	298	600	128	141	269	61	23	84	1	8	9	2	964	878
Totals	4280	4402	8709	1794	1832	3626	1217	354	1571	49	154	203	68	14177	12538



ILB 2002/2003 monthly

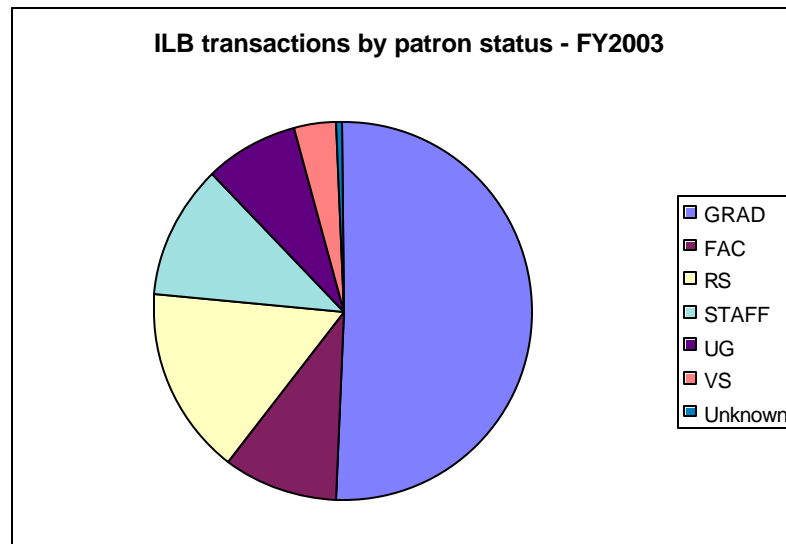


ILB transactions by department - FY2003

Patron's Department	Photocopies	Originals	Total
CHEMENG	844	97	941
MECHENG	635	132	767
BEH	630	38	668
POLISCI	266	371	637
CEE	501	129	630
SLOAN	383	240	623
MATSCI&ENG	507	57	564
DUSP	257	293	550
BIOL	456	54	510
LINGPHIL	328	162	490
BCS	432	53	485
ARCH	194	280	474
CHEM	392	40	432
EECS	313	98	411
FLL	86	282	368
ECON	231	131	362
STS	175	150	325
NUCENG	219	33	252
EAPS	188	63	251
LIB	146	89	235
AEROASTRO	129	76	205
HST	158	32	190
MATH	103	65	168
LIT	67	86	153
MAS	79	65	144
DIBNER	63	79	142
WRITING	59	60	119
CMS	66	40	106
PHYSICS	69	36	105
OE	57	34	91
ANTH	39	28	67
HIST	39	28	67
WHIT	9	5	14
MUSIC	2	9	11
Subtotal	8122	3435	11557
Labs or Unknown subtotal	582	189	771
Total	8704	3624	12328

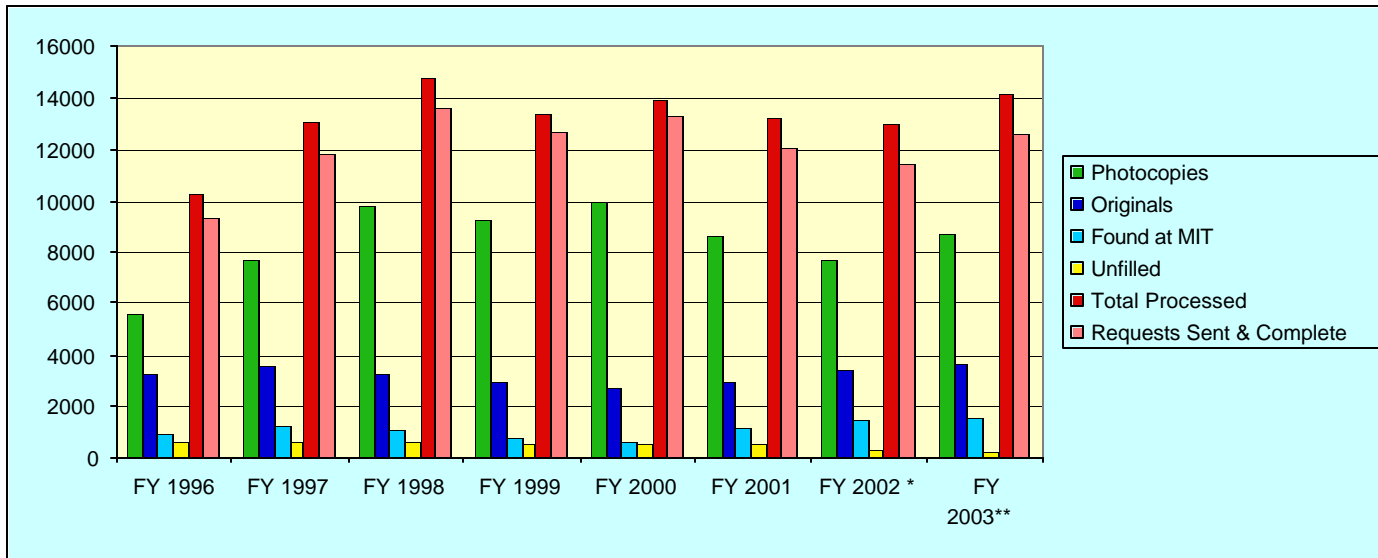
ILB transactions by patron status - FY2003

Patron status	Photocopies	Originals	Total
GRAD	4396	1728	6124
FAC	841	910	1751
RS	1417	288	1705
STAFF	994	298	1292
UG	688	276	964
VS	314	85	399
Unknown	54	39	93
Total	8704	3624	12328



ILB FY1996-FY2003

Fiscal Year	Photocopies	Originals	Found at MIT	Unfilled	Total Processed	Requests Sent & Complete
1996	5608	3215	916	575	10314	9398
1997	7719	3579	1251	588	13137	11886
1998	9785	3257	1058	615	14715	13657
1999	9254	2894	773	491	13412	12639
2000	10021	2742	670	516	13949	13279
2001	8591	2930	1158	486	13174	12007
2002	7733	3381	1487	341	12977	11455
2003	8709	3626	1571	203	14177	12538



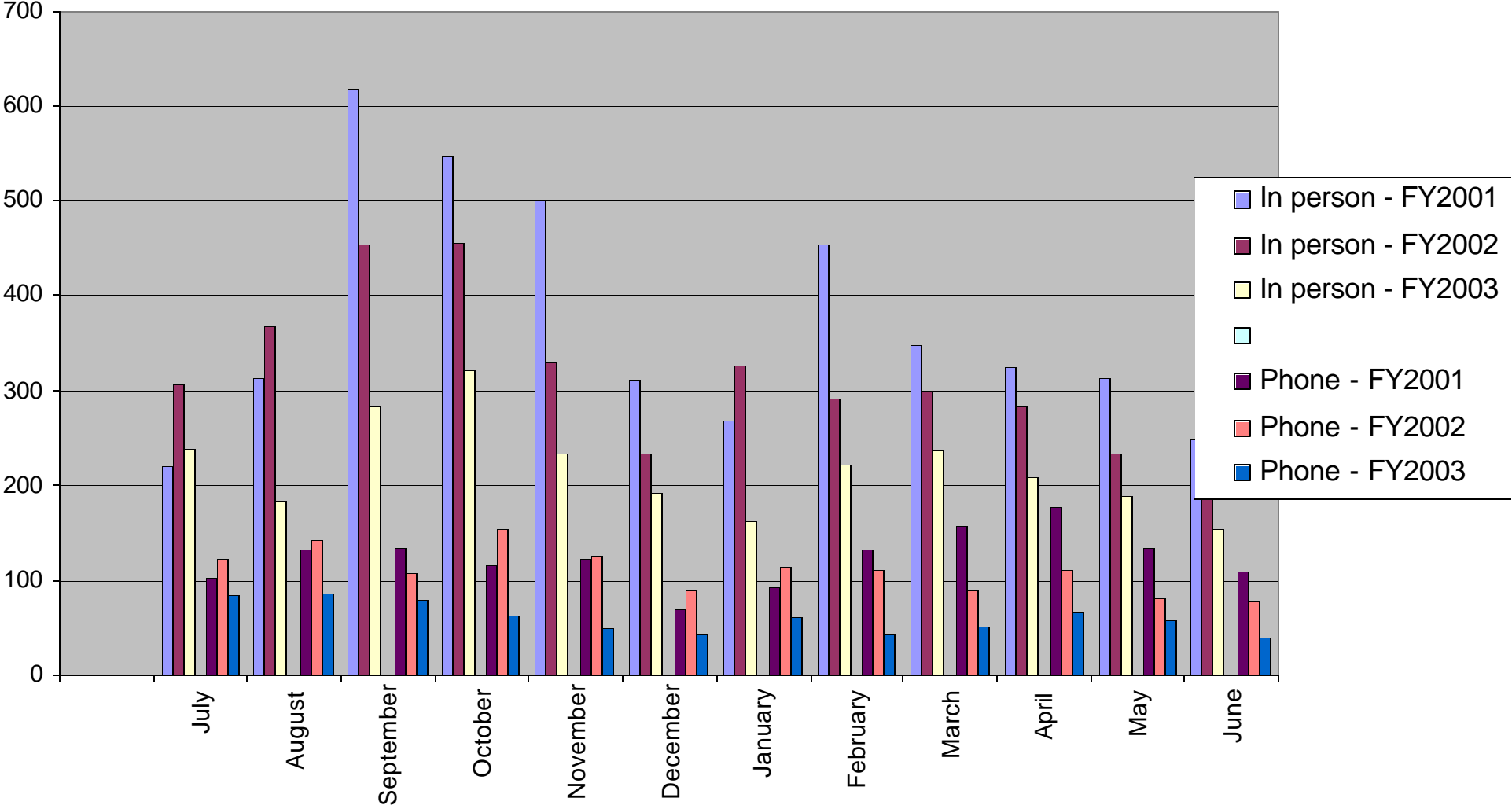
Questions at the Reference Desk 2002-03

	10-11	11-12	12-1	1-2	2-3	3-4	4-5	Total
Reference in Person	220	383	395	413	419	348	444	2622
Reference by Phone	85	118	116	109	116	91	77	712
Total Reference	305	501	511	522	535	439	521	3334
Directional in Person	227	285	286	443	450	397	362	2450
Directional by Phone	34	36	24	21	50	45	44	254
Total Directional	261	321	310	464	500	442	406	2704

Humanities Reference Desk Statistics FY 2001-3

	Ref in person				Ref by phone		
	In person - FY2001	In person - FY2002	In person - FY2003		Phone - FY2001	Phone - FY2002	Phone - FY2003
July	220	306	239		101	124	83
August	313	368	184		131	142	85
September	618	454	282		134	107	78
October	546	457	323		115	152	63
November	500	330	233		122	125	48
December	310	235	192		69	87	42
January	269	327	163		92	113	60
February	455	291	222		133	112	41
March	348	298	236		157	87	50
April	325	282	208		176	111	66
May	312	235	188		135	80	57
June	248	188	152		108	77	39
Totals	4464	3771	2622		1473	1317	712

Humanities Reference Desk : FY2001-3



Ask Us! Statistics 2000-2001

	Jul	Aug	Sep	Oct	Nov	Dec	Jan	Feb	Mar	Apr	May	Jun
Humanities	4	4	9	19	8	4	12	21	17	15	22	23

Ask Us! Statistics 2001-2002

	Jul	Aug	Sep	Oct	Nov	Dec	Jan	Feb	Mar	Apr	May	Jun
Humanities	22	30	29	29	31	26	26	14	36	39	39	39

Ask Us! Statistics 2002-2003

	Jul	Aug	Sep	Oct	Nov	Dec	Jan	Feb	Mar	Apr	May	Jun
Humanities	26	31	30	23	20	18	25	32	30	30	32	38

	<5 minutes	5-20 minutes	>20 minutes	Total
In Person Questions (includes research appointments)	77	28	20	125
Phone Questions	33	15	2	50
Email Questions (includes Ask Us)	273	128	28	429
Ask Us Live Questions	14	16	3	33
Total Questions	397	187	53	637
Follow-Ups*	20	21	6	47
*(any format, from any previous interaction, including Ask Us Live or reference desk)				

ILB Reference				
Staus Check	Renewals	ED Problems	ilb help	
40	100	18	158	
35	101	9	145	
49	81	18	148	
60	68	18	146	
50	118	12	180	
37	109	8	154	
75	58	16	149	
41	48	16	105	
52	92	14	158	
59	81	16	156	
56	64	18	138	
26	28	13	67	
580	948	176	1704	

Hayden Circulation Statistics

FY2003	DoorCount	IN House Use	Checkins	Checkouts/Renewals	Total Circ transactions
Hayden	350,675				
Science		27414	43978	68677	
Humanities		24,962	35663	48140	
Hayden basement		59719			
ILB			3411	3423	
3M				6009	
Manual				2929	
Laptops				840	
Reserve			11479	14282	
Totals	350,675	112095	94531	144300	350,926

FY2002	DoorCount	IN House Use	Checkins	Checkouts	Total Circ transactions
Hayden	317917				
Science		46946	46687	67245	
Humanities		29095	37411	46888	
Hayden basement		77592			
ILB			1662	2486	
3M				4718	
Manual				3716	
Laptops					
Totals	317917	153633	85760	125053	364446

Processing time for items included in the Stellar E-Reserves Pilot, fall 2002:

➤ 26 courses with 577 items → 3001 minutes (50 hours) → 5.2 minutes/item*

(*does not include work done by Document Services or time spent seeking permissions)

Courses Supported	Fall 2002	Spring 2003	Total
Dewey	12	10	22
Humanities	7	14	21
Rotch	5	7	12
Music	1	3	4
Science	1	2	3
Total	26	36	62

Items Processed	Fall 2002	Spring 2003	Total
Dewey	263	370	633
Music	79	244	323
Rotch	119	153	272
Humanities	90	166	256
Science	26	21	47
Total	577	954	1531

“Fair use” and permissions	Fall 2002	Spring 2003	Total
Total items (non-music)	498	710	1208
Identified as “fair use”	451 (90.6%)	603 (85%)	1054 (87%)
Identified as outside “fair use”	61 (12.2%)	107 (15%)	168 (14%)
Not posted – added to paper reserves	14 (2.8%)	32 (4.5%)	46 (3.8%)
Permissions sought	47 (9.45%)	75 (10.5%)	122 (10.1%)

Humanities Instruction

Course Name	# Attendees	Type of Event
American Literature	27	course-related instruction
American Women Authors	7	course-related instruction
Culture Shock! Writing, Editing & Publishing in Cyberspace	10	course-related instruction
Expository Writing for Bilingual Students	15	course-related instruction
Expository Writing for Bilingual Students	10	course-related instruction
Expository Writing for Bilingual Students	7	course-related instruction
Expository Writing for Bilingual Students	15	course-related instruction
Expository Writing: Social & Ethical Issues	8	course-related instruction
Expository Writing: Social & Ethical Issues	15	course-related instruction
IAP	5	library orientation
IAP	0	library orientation
IAP	2	library orientation
IAP	42	library orientation
IAP	2	library orientation
IAP	14	library sponsored special event
Interphase Writing	18	course-related instruction
Interphase Writing	18	course-related instruction
Interphase Writing	18	course-related instruction
Introduction to Psychology	14	course-related instruction
Introduction to Psychology	21	course-related instruction
Introduction to Psychology	13	course-related instruction
Introduction to Psychology	12	course-related instruction
Introduction to Psychology	300	library orientation
Introduction to Psychology	1	course-related instruction
Introduction to Psychology	4	course-related instruction
Introduction to Psychology	12	course-related instruction
Introduction to Psychology	5	course-related instruction
Introduction to Psychology	3	course-related instruction
Introduction to Psychology	10	course-related instruction
Introduction to Psychology	7	course-related instruction
Introduction to Psychology	4	course-related instruction
Introduction to Psychology	17	course-related instruction
Introduction to Psychology	12	course-related instruction
Introduction to Psychology	25	course-related instruction
Introduction to Psychology	3	course-related instruction
Introduction to Psychology	8	course-related instruction
Introduction to Psychology	5	course-related instruction
Introduction to Psychology	3	course-related instruction
Introduction to Psychology	1	course-related instruction
Research Methods	9	library orientation
Writing about Literature	15	course-related instruction
	10	special workshop
	25	special workshop
	2	special workshop
	12	special workshop
	35	library sponsored special event
	15	library orientation
	10	library orientation
	25	library sponsored special event
	45	library sponsored special event
	50	library sponsored special event
	120	library sponsored special event
	45	library sponsored special event
	180	library sponsored special event
	45	library sponsored special event
	45	library sponsored special event
	20	library sponsored special event
	50	library sponsored special event
	100	library sponsored special event
Total	1571	

**Authors@MIT
FY03**

FALL 2002

			# Attendees	Book featured / # sold
9/18/02	authors -Kanigel	HUM		25 High Season / 3
9/26/02	authors -Thompson	E25-111		45 Soundscapes / 1
10/10/02	authors -Mindell	34-101		50 Between human and machine / 11
10/22/02	authors -Rheingold	26-100		55 Smart Mobs / 10
10/31/02	authors -Pinker	10-250		250 Blank Slate / 25
11/9/02	authors -Haglund	Walker		250 Inventing the Charles River / bk n/a

SubTotal Fall 2002

675

SPRING 2003

2/13/03	authors -Williams	Bartos		45 Retooling / 9
3/6/03	authors -McElheny	Wong		45 Watson & DNA / 6
3/13/03	authors -Bartusiak	HUM		20 Einstein's unfinished symphony / 2
3/20/03	authors -Guarente	E25-111		50 Ageless Quest / 11
4/10/03	authors -Frankel	26-152		100 Envisioning science / 9

SubTotal Fall 2002

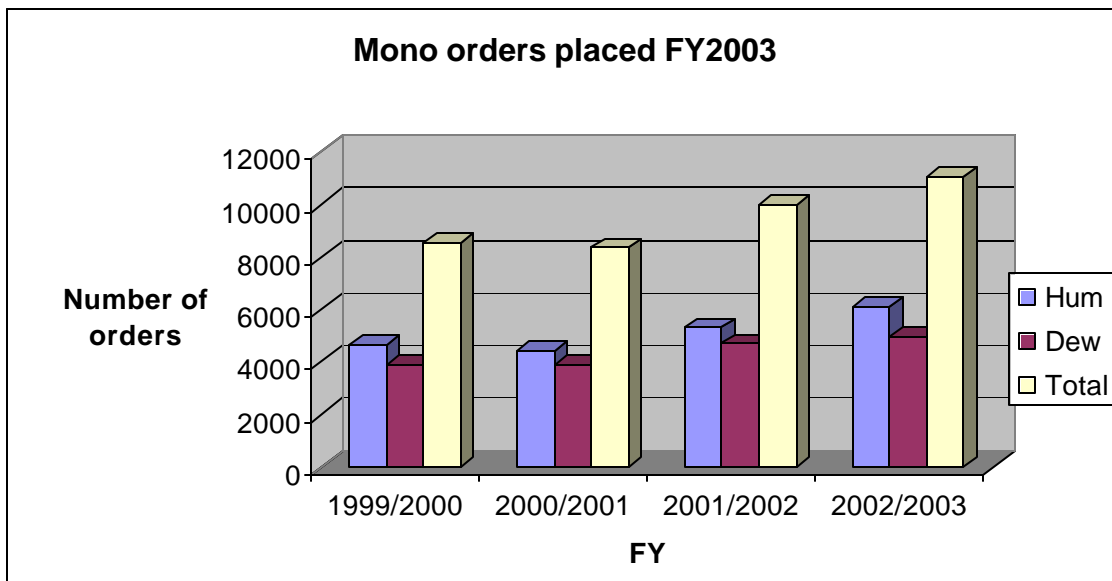
260

Total FY03

935

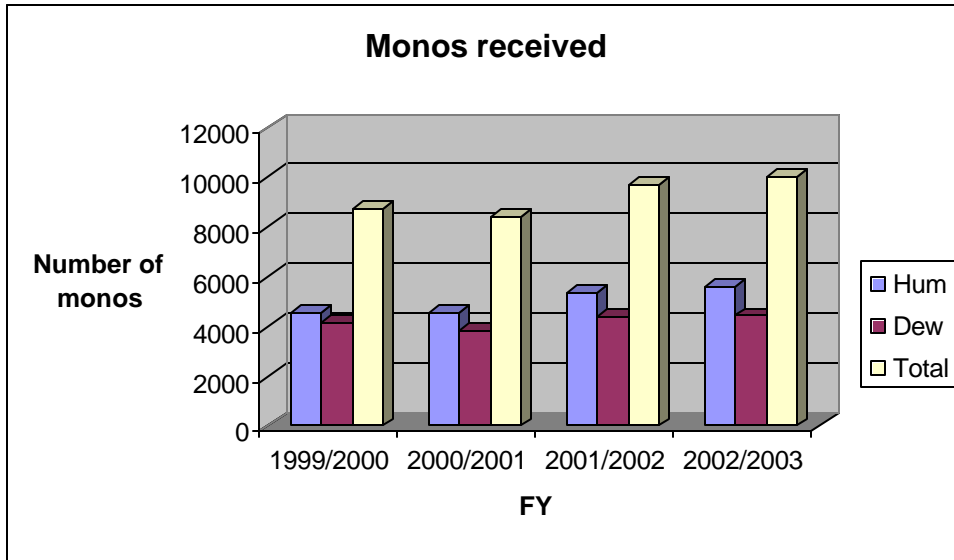
Monograph orders placed:

Dew: 4,965
Hum: 6,079
Total: 11,044



Monographs received:

Dew: 4,429
Hum: 5,633
Total: 10,062



Monographs/serials sent to storage:

Dew: 5,509
Hum: 2,468
Total: 7,977

Journals sent to storage:

Dew: 4,490
Hum: 17
Total: 4,507

Binding budget for journals, monographs and serials:

Dew: \$44,752.20 or 21.3% of total binding budget
Hum: \$33,742.50 or 16.0% of total binding budget
Total: \$78,494.70 or 37.3% of total binding budget